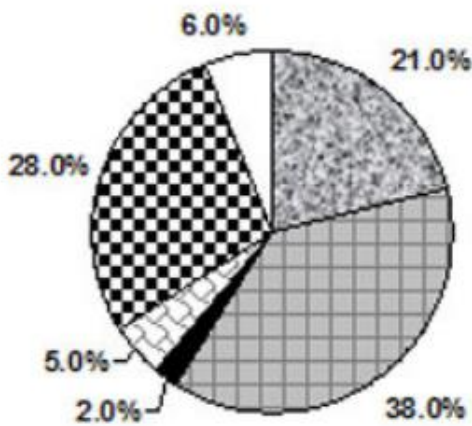


Academic Writing Task 1

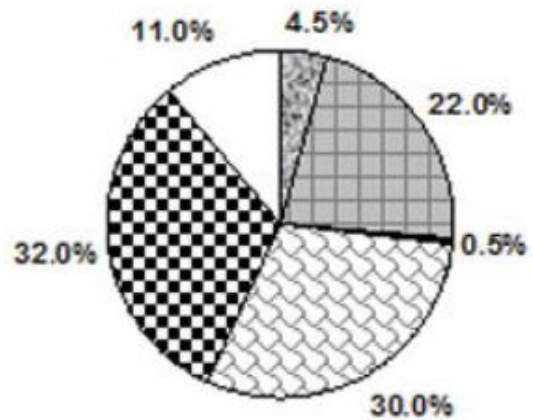
The two pie charts below compare employment patterns in Great Britain by sex in 2010. Summarise the information by selecting and reporting the main features and, make comparisons where relevant.

Write at least 150 words. 20 mins.

Males



Females



- | | |
|-------------------|---------------------------|
| Craft or similar | Managerial & professional |
| General labourers | Clerical & related |
| Other manual | Other non-manual |

Academic Writing Task 2

Some people think that children should be taught at school to recycle materials and avoid waste. Other people believe that children should be taught this at home. Discuss both opinions and give your own opinion.

Give reasons for your answer and include any relevant examples from your own experience or knowledge.

Write at least 250 words. 40 mins